



- g.MOBIlab+  EEG version  
 multi-purpose version

- g.GAMMAcap<sup>2</sup>  
 g.GAMMAcap<sup>3</sup>



- Consumables

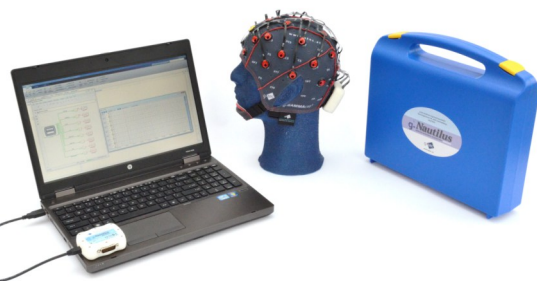
- Electrodes  active  
 passive  
 dry



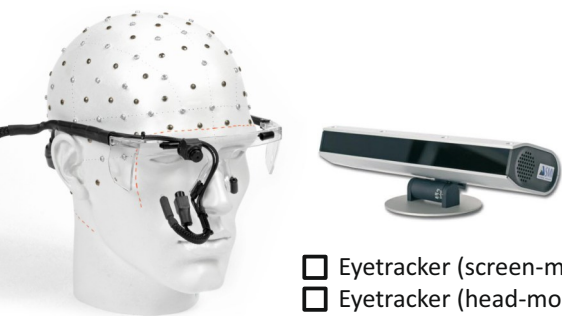
- g.USBamp  16 channels  
 32 channels  
 48 channels  
 64 channels



- g.HIamp  80 channels  
 144 channels  
 256 channels



- g.Nautilus  8 channels  
 16 channels  
 32 channels  
 64 channels



- Eyetracker (screen-mounted)  
 Eyetracker (head-mounted)



- Sensors  GSR  
 Blood pressure  
 Respiration  
 Temperature  
 Pulse  
 Acceleration  
 More sensors



- Electrical stimulator  
 FES stimulator



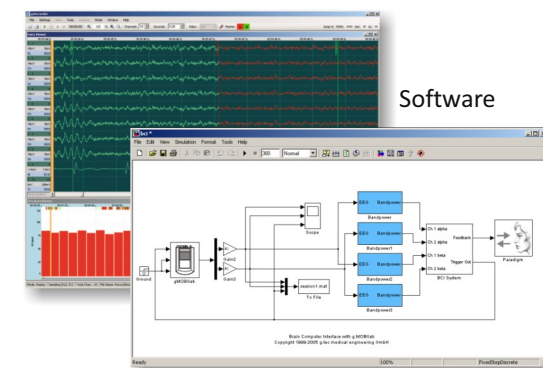
- g.STIMbox  
 g.SSVEPbox



- Impedance tester  
 Signal generator

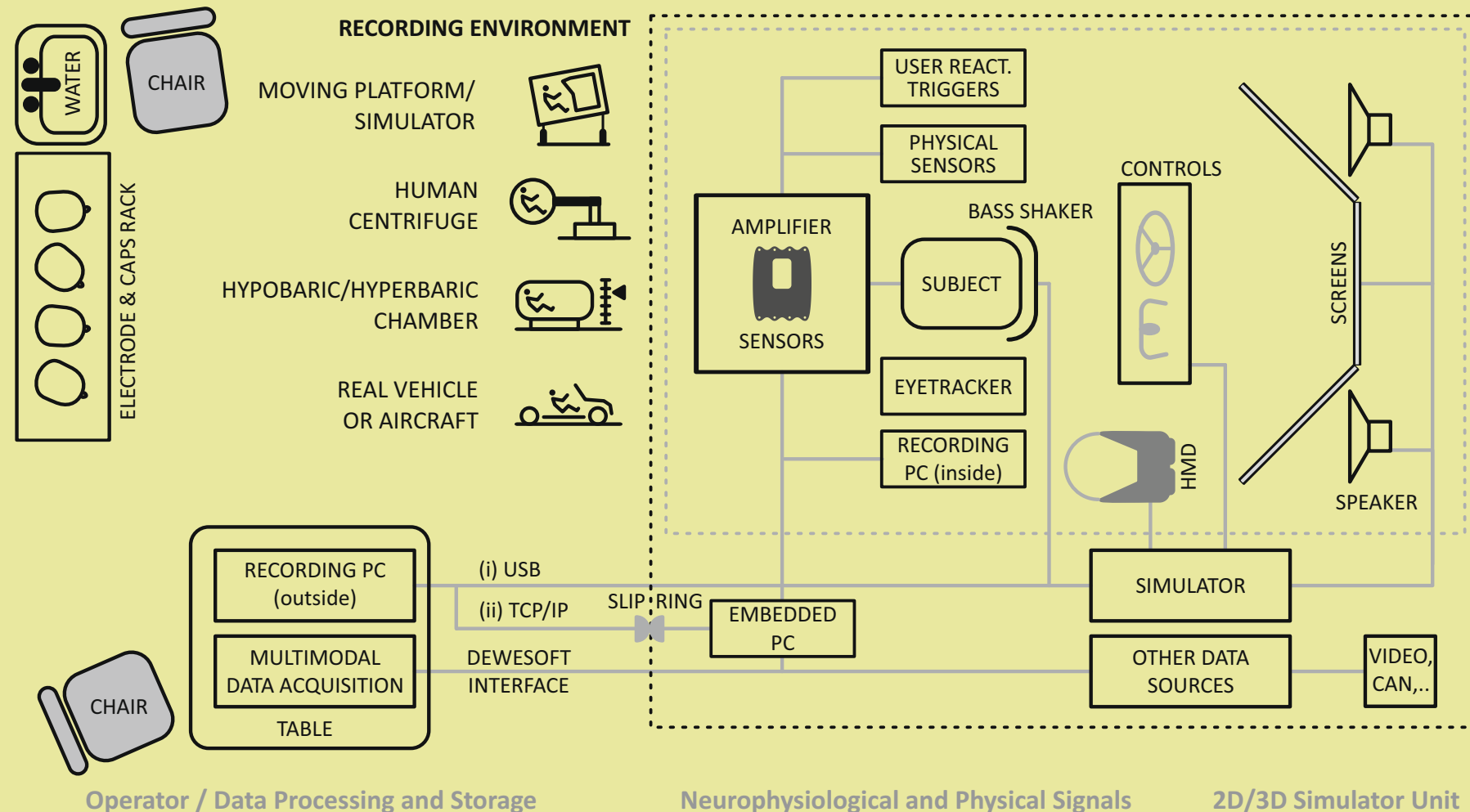


- VR-system



Software

## Automotive/Aerospace Neurophysiology Lab



g.tec medical engineering GmbH, office@gtec.at, www.gtec.at, tel. +43 7251 22240, fax +43 7251 22240 39 g.tec

(A) Everything inside the recording environment (e.g. hypobaric chamber, vehicle, aircraft)

(B) Recording computer outside, amplifier inside nearby (< 3m), USB connection (e.g. hyperbaric chamber, moving platform simulator)

(C) Recording computer far away (> 3m), amplifier inside, TCP/IP connection (e.g. human centrifuge)

Request an offer for

- Moving platform/simulator lab
- Human centrifuge/aerospace lab
- Real vehicle/aircraft lab
- Hypobaric/hyperbaric lab

Check products of interest and request an offer per fax (+43 7251 22240 39) or e-mail (office@gtec.at) !